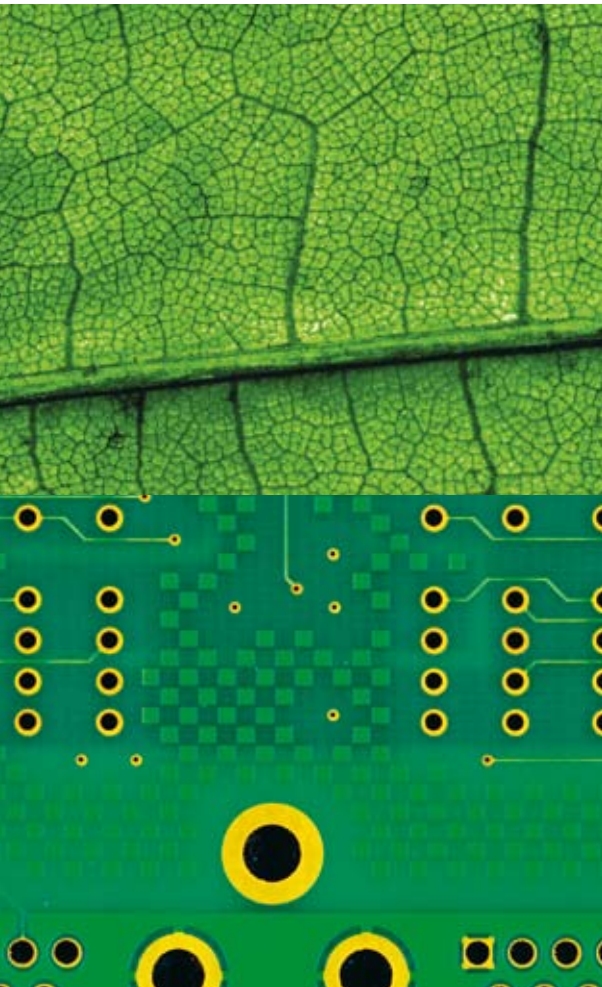




Jan van der Wel

CEO



/foreword

We read and hear more and more about the impact of our current human activities on the environment. The fear of climate change is making people think. More and more new initiatives are being conceived to stop climate change. These are both big projects designed to ensure that the environmental effects are reduced through innovation and smaller initiatives between companies.

>>change begins with yourself

The world will have to adjust to a new mentality; thinking and acting in more environmentally friendly ways. On the other hand, we also need new technologies to reduce the impact on the environment. The two go hand in hand. There is no way back to nature as it once existed. Advanced measurement and control technology makes it possible to identify environmental effects and manage our activities to alleviate them. For example, increasing the energy efficiency of vehicles and better mobility management to reduce the number of unnecessary kilometres travelled.

Making an environmental management plan is often the first step companies make towards a greener policy. At Technolution, we view environmental management in two ways. On one hand, we observe our development processes, which we then optimise; on the other, we think about what can be done with our expertise to achieve improvements in our customers' operations. This is one of the reasons why we are supporting the students of the Nuna5 solar-powered car project.

As an organisation, we form part of extensive ecosystems in which we are responsible for the design, construction and integration of products and systems. Every ecosystem has its own environmental aspects and attendant effects on the environment. The challenge is to reflect these effects in the design under the label 'Design for Environment', by means of which we encourage our customers and partners to also think about the environment. I hope we can encourage you to do the same with the articles in this edition of Objective.

Happy reading!